



BOTTLE FILLER

BF48 Series

MODEL A000000-BF48

SEMI-RECESSED SENSOR OPERATED BOTTLE FILLER

STANDARD FEATURES

- 100 mesh inlet strainer
- Laminar Flow Water Supply
- 1 G.P.M. Fill Rate
- Lead Free
- Hinged Door
- Key Latch
- Meets ADA Forward and Side Reach Requirements
- Ligature-Resistant Design
- Vandal-Resistant Design

SUGGESTED SPECIFICATIONS

Model A000000-BF4 is a Semi-Recessed sensor operated bottle filler. Bottle Filler can be mounted in a 4" or larger wall space for simple installation virtually anywhere. Housing has a slim and trim look that blends into your environment. Unit also has a strong, ligature resistant, and vandal-resistant design for years of trouble-free service. When installed properly, the bottle filler complies with ADA forward and side reach requirements. Bottle filler is fabricated of type 304 stainless steel polished to a satin finish. Bottle filler is fabricated of type 304 stainless steel polished to a satin finish. Unit is certified to ANSI A117.1, Public Law 111-380 (NO-LEAD), CHSC 116875 and NSF/ANSI 61, Section 9.



Model BF48 Shown

"INDOOR USE ONLY"

MODEL:

(Must Specify)

- BF48 18 Gage 304 Stainless Steel

OPTIONS

(additional costs may be incurred)

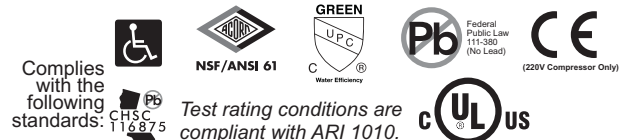
- BAT Battery Operated (N/A With Bottle Counter)
- BCD Bottle Counter Display
- CG1 Custom Graphics
- EG Enviro-Glaze
Specify Color: _____
- WF1 1500 gallon capacity, NSF 42+53, 1 micron lead reduction water filter

Model Number	GPH*	Rated Watts	Full Load Amps	Approx. Shipping Weight
BF48	8.0	390	4.6	110 lbs.

* GPH of 50°F water at 90°F ambient room temperature and 80°F inlet water temperature
Compressor motor operates on 115 Volt / 60 Hz single phase.



Please visit www.murdockmfg.com for most current specifications.



Complies with the following standards: CHSC 116875

Test rating conditions are compliant with ARI 1010.

MURDOCK MFG. • 15125 Proctor Avenue • City of Industry, CA 91746 USA
Phone 800-453-7465 or 626-333-2543 • Fax 626-855-4860 • www.murdockmfg.com

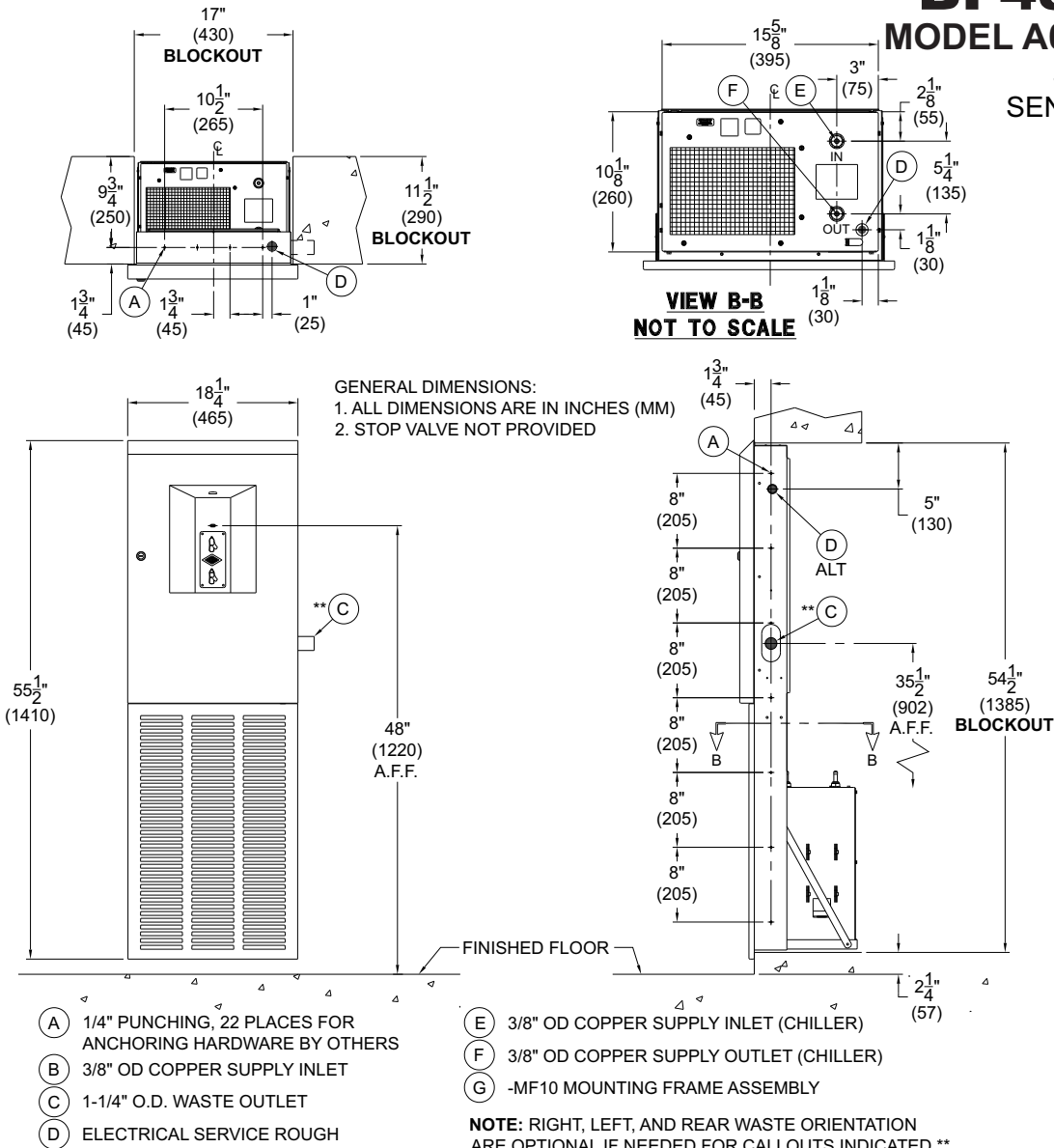
Member of MORRIS GROUP INTERNATIONAL



BOTTLE FILLER

All dimensions are subject to manufactures tolerance of plus or minus 1/2" nominal and subject to change without notice. Murdock Mfg. assumes no responsibility for use of void or superseded data. Dimensions may change with the addition of optional accessories. Murdock Mfg.™, Member of Morris Group International™. Please visit www.Murdockmfg.com for most current specifications.

BF48 Series MODEL A000000-BF48 SEMI-RECESSED SENSOR OPERATED BOTTLE FILLER



Murdock Mfg.™ warrants that its products are free from defects in material or workmanship under normal use and service for a period of one year from date of shipment. Murdock's liability under this warranty shall be discharged solely by replacement or repair of defective material, provided Murdock™ is notified in writing within one year from date of shipment, F.O.B. Industry, California.

SELECTION SUMMARY & APPROVAL FOR MANUFACTURING	Model Number & Options _____	Quantity _____	All dimensions are subject to manufactures tolerance of plus or minus 1/2" nominal and subject to change without notice. Murdock assumes no responsibility for use of void or superseded data. Dimensions may change with the addition of optional accessories. Murdock Mfg.™, Member of Morris Group International™. Please visit www.murdockmfg.com for most current specifications.
	Company _____		
	Contact _____	Title _____	
	Signature (Approval for Manufacturing) _____	Date _____	