



# TRADITIONAL DRINKING FOUNTAINS

## Retro Series

### MODEL M-30

OCTAGON SINGLE HEIGHT  
WITH FOOT PEDAL

#### STANDARD FEATURES

Model M-30 is a drinking fountain of classic design. The control valve is below the frost line to provide anti-freezing functionality. Activating the foot pedal raises the or lowers the internal supply line and waste tube assembly controlling the valve. Constructed with all brass parts and a stainless steel main spring. The M-30 is equipped with an automatic stream control for year round use. The M-30 is designed for trouble-free reliability and easy maintenance.

#### SUGGESTED SPECIFICATIONS

Drinking fountain shall be Murdock-Super Secur model M-34. Unit shall be capable of year-round use in freezing or inclement weather.

Pedestal shall be fabricated of heavy duty iron casting extending from grade line to bowl. Pedestal shall be predominantly octagonal with an octagonal base with four mounting holes and finished with a heavy grade oil-based enamel paint.

Bowl shall be a octagonal, chrome-plated, solid brass casting with outer edge at least 8-1/2" from center of bubbler outlet. Drain opening in the bowl shall be fabricated of chrome-plated, solid brass casting and shall be adequately protected from stoppage and vandalism. Bubbler shall be chrome-plated, solid brass casting with outlet near edge of bowl above the rim. Mouthguard shall be chrome-plated, solid brass casting mounted on the outer edge of bowl to meet sanitary requirements. All solid brass castings shall conform to ASTM standards B61 and B62. Lead-free castings shall be used in all waterways. Valve and bubbler conform with lead-free requirements of NSF61, Section 9, 1997 and CHSC 116875.

Valve shall be foot pedal operated spring loaded to close. Pedal shall consist of aluminum bronze. The mainspring shall be stainless steel wire with a 1/4" minimum diameter.



**Standard Model:** M-30

#### DEPTH OF BURY *(additional costs may be incurred)*

- |   |   |
|---|---|
| <input type="checkbox"/> 2 ft. (61 cm)    | <input type="checkbox"/> 5 ft. (152.4 cm) |
| <input type="checkbox"/> 3 ft. (91.4 cm)  | <input type="checkbox"/> 6 ft. (182.9 cm) |
| <input type="checkbox"/> 4 ft. (121.9 cm) | <input type="checkbox"/> Other _____      |

#### OPTIONS *(additional costs may be incurred)*

- |   |   |
|---|---|
| <input type="checkbox"/>                | Chrome plated bowl and mouth guard (Standard) |
| <input type="checkbox"/>                | Polished brass bowl and mouth guard           |
| <input type="checkbox"/>                | Powder-coated brass bowl and mouth guard      |
| <input type="checkbox"/> - <b>Brown</b> | Pedestal color brown (standard)               |
| <input type="checkbox"/> - <b>Black</b> | Pedestal color black                          |
| <input type="checkbox"/> - <b>Green</b> | Pedestal color green                          |

Please visit [www.murdock-supersecur.com](http://www.murdock-supersecur.com) for most current specifications.



Member of  
U.S. Green  
Building  
Council



Recyclable  
Product

Complies with the  
following standard::



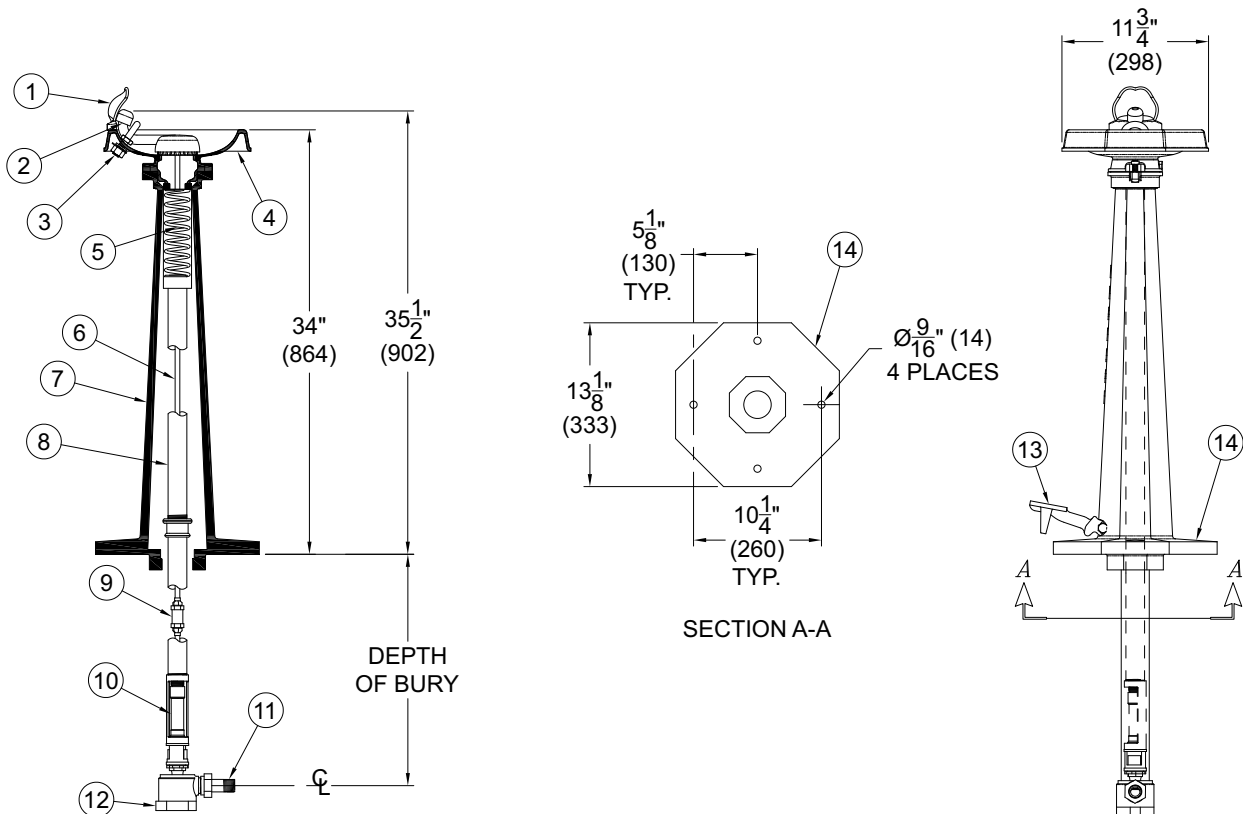
MURDOCK-SUPER SECUR • 15125 Proctor Avenue • City of Industry, CA 91746 USA  
Phone 800-453-7465 or 626-333-2543 • Fax 626-855-4860 • [www.murdock-supersecur.com](http://www.murdock-supersecur.com)





# TRADITIONAL DRINKING FOUNTAINS

## Retro Series MODEL M-30 OCTAGON SINGLE HEIGHT WITH FOOT PEDAL



- ① MOUTH GUARD
- ② GOOSENECK & BUBBLER
- ③ U-BOLT
- ④ BOWL
- ⑤ MAINSPRING
- ⑥ WATER SUPPLY LINE
- ⑦ PEDALSTAL
- ⑧ WASTE TUBE
- ⑨ .75 GPM FLOW CONTROL
- ⑩ VALVE
- ⑪ 3/4" IPS MALE SUPPLY CONNECTION
- ⑫ 2" IPS FEMALE DRAIN CONNECTION
- ⑬ FOOT PEDAL
- ⑭ PEDALSTAL BASE

**ONE YEAR LIMITED WARRANTY** - Parts are warranted for one (1) year from date of shipment.

SELECTION SUMMARY & APPROVAL FOR MANUFACTURING

Model Number & Options \_\_\_\_\_ Quantity \_\_\_\_\_

Company \_\_\_\_\_

Contact \_\_\_\_\_ Title \_\_\_\_\_

Signature (Approval for Manufacturing) \_\_\_\_\_ Date \_\_\_\_\_

*All dimensions are nominal and subject to change without notice. Murdock-Super Secur assumes no responsibility for use of void or suspended data.*  
 © Copyright Murdock-Super Secur, Acorn Family of Companies  
 Please visit [www.murdock-supersecur.com](http://www.murdock-supersecur.com) for most current specifications.

